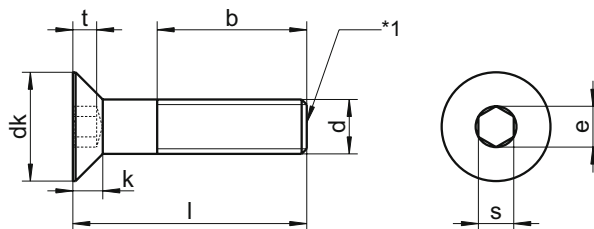


# DIN 7991 - sim. ISO 10642

## Countersunk flat head screws

with hexagon socket



dk	6	8	10	12	16	20	24	30	36	39
k	1,7	2,3	2,8	3,3	4,4	5,5	6,5	7,5	8,5	14,0
s	2,0	2,5	3,0	4,0	5,0	6,0	8,0	10,0	12,0	14,0
b	12	14	16	18	22	26	30	38	46	54
t	1,2	1,8	2,3	2,5	3,5	4,4	4,6	5,3	5,9	10,3
e	2,30	2,87	3,44	4,58	5,72	6,86	9,15	11,43	13,72	16,00
●	2,0	2,5	3,0	4,0	5,0	6,0	8,0	10,0	12,0	14,0
Length / Ø	M3	M4	M5	M6	M8	M10	M12	M16	M20	M24
6	▲●	▲●	▲●							
8	▲●	▲●	▲●	▲●						
10	▲●	▲●	▲●	▲●	▲●					
12	▲●	▲●	▲●	▲●	▲●	▲●				
14	▲●	▲●	▲●	▲●	▲●	▲●				
16	▲●	▲●	▲●	▲●	▲●	▲●	▲●			
18	▲●	▲●	▲●	▲●	▲●	▲●	▲●	▲●		
20	▲●	▲●	▲●	▲●	▲●	▲●	▲●	▲●		
22	▲●	▲●	▲●	▲●	▲●	▲●	▲●	▲●		
25	▲●	▲●	▲●	▲●	▲●	▲●	▲●	▲●	▲●	
30	▲●	▲●	▲●	▲●	▲●	▲●	▲●	▲●	▲●	
35	▲●	▲●	▲●	▲●	▲●	▲●	▲●	▲●	▲●	▲●
40	▲●	▲●	▲●	▲●	▲●	▲●	▲●	▲●	▲●	▲●
45		▲●	▲●	▲●	▲●	▲●	▲●	▲●	▲●	▲●
50		▲●	▲●	▲●	▲●	▲●	▲●	▲●	▲●	▲●
55		▲●	▲●	▲●	▲●	▲●	▲●	▲●	▲●	▲●
60		▲●	▲●	▲●	▲●	▲●	▲●	▲●	▲●	▲●
65		▲●	▲●	▲●	▲●	▲●	▲●	▲●	▲●	▲●
70		▲●	▲●	▲●	▲●	▲●	▲●	▲●	▲●	▲●
75			▲●	▲●	▲●	▲●	▲●	▲●	▲●	▲●
80			▲●	▲●	▲●	▲●	▲●	▲●	▲●	▲●
90			▲●	▲●	▲●	▲●	▲●	▲●	▲●	▲●
100			▲●	▲●	▲●	▲●	▲●	▲●	▲●	▲●
110				▲●	▲●	▲●	▲●	▲●	▲●	▲●
120				▲●	▲●	▲●	▲●	▲●	▲●	▲●
130					▲●	▲●	▲●	▲●	▲●	▲●
140					▲●	▲●	▲●	▲●	▲●	▲●
150					▲●	▲●	▲●	▲●	▲●	▲●
160					▲●	▲●	▲●	▲●	▲●	▲●
SU	1000	1000	500	500	200	200				
	≥ 25	≥ 20	≥ 30	≥ 22	≥ 45	≥ 20				
	500	500	200	200	100	100	≥ 80	25	≥ 100	10
		≥ 30	≥ 90	≥ 45	≥ 70	≥ 65	25		10	≥ 100
		200	100	100	50	50				5

■ A1 / ▲ A2 / ● A4 | SU: Sales unit | All measurements in mm | Other dimensions on request.

Example item no. 7991-2-8X40 DIN 7991 - A2 - M8 - l = 40mm - \*1 with flat point acc. to DIN 78

Please note, that we stock a separate product proposal for countersunk head screws DIN 7991, which have full thread in opposition to the standard at DIN 7991 V0. They can be found on the following page. Slotted countersunk head screws can be found as DIN 963, with cross recess H and Z as DIN 965, with TX as WS 9470 and WS 9475 and as safety screw with TX+PIN as WS 9482 in this catalogue.