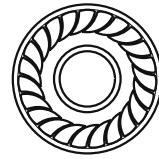
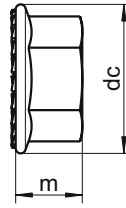
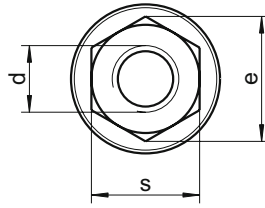


# WS 9345 - sim. DIN 6923

## Hexagon nuts

with flange and serration



d	dc	m	s	e	⬤
M4	10,0	4,65	7	7,66	7
M5	11,8	4,70	8	8,79	8
M6	14,2	5,70	10	11,05	10
M8	17,9	7,64	13	14,38	13
M10	21,8	9,64	15	17,77	15
M12	26,0	11,57	18	20,03	18
M16	34,5	15,30	24	26,75	24

Grade	SU
▲●	200
▲●	200
▲●	200
▲●	200
▲●	100
▲●	100
▲●	100

■ A1 / ▲ A2 / ● A4 | SU: Sales unit | All measurements in mm | Other dimensions on request.

Example item no. 9345-2-8 WS 9345 - A2 - M8